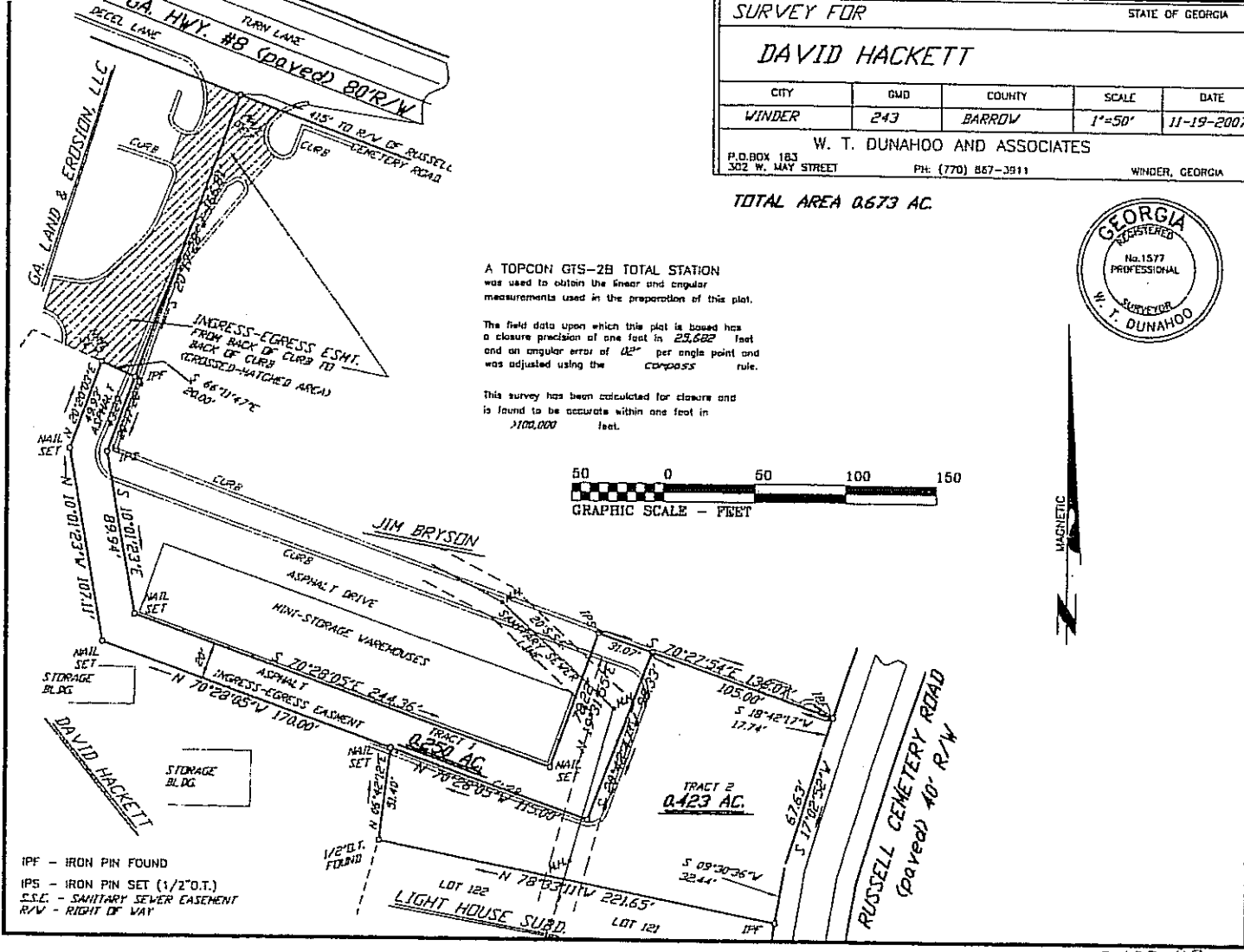


DAVID HACKETT

| CITY | GMD | COUNTY | SCALE | DATE |
|--------|-----|--------|--------|------------|
| WINDER | 243 | BARROW | 1"=50' | 11-19-2007 |

W. T. DUNAHOO AND ASSOCIATES
 P.O. BOX 183
 302 W. MAY STREET WINDER, GEORGIA
 PH: (770) 867-3911

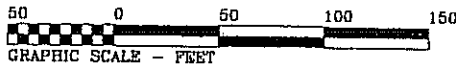
TOTAL AREA 0.673 AC



A TOPCON GTS-2B TOTAL STATION was used to obtain the linear and angular measurements used in the preparation of this plat.

The field data upon which this plat is based has a closure precision of one foot in 23,682 feet and an angular error of 0.2" per angle point and was adjusted using the compass rule.

This survey has been calculated for closure and is found to be accurate within one foot in 1100,000 feet.



- IPF - IRON PIN FOUND
- IPS - IRON PIN SET (1/2" O.T.)
- S.S.E. - SANITARY SEWER EASEMENT
- R/W - RIGHT OF WAY

C 198 43