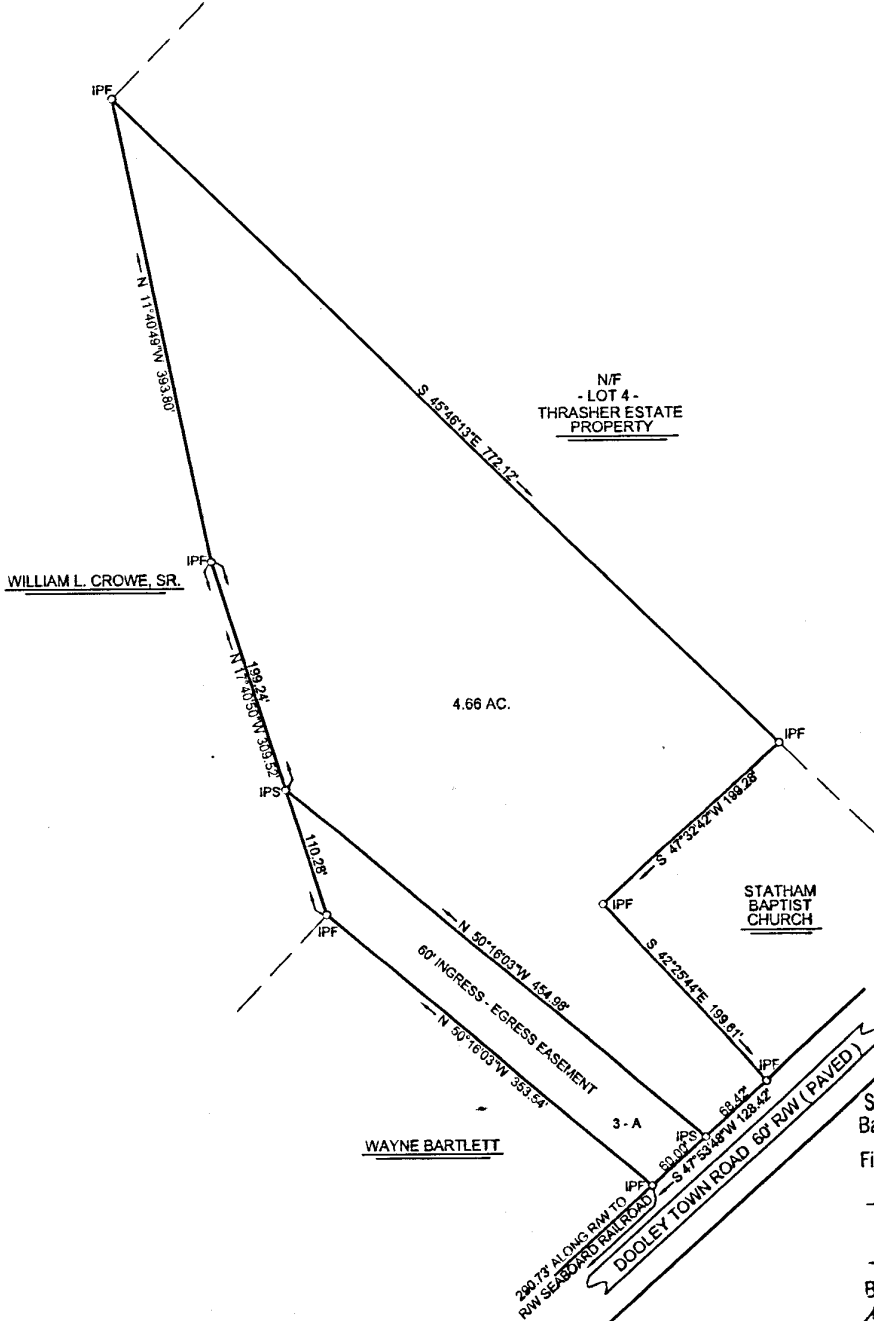


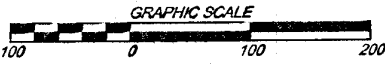
A TOPCON GTS-2B TOTAL STATION was used to obtain the linear and angular measurements used in the preparation of this plat.

The field data upon which this plat is based has a closure precision of one foot in 22,000 feet and an angular error of 2" per angle point and was adjusted using the compass rule.

This survey has been calculated for closure and is found to be accurate within one foot in >140,000 feet.



STATE OF GEORGIA  
Barrow Superior Court,  
Filed Feb 14, 2007  
2 P.M.  
Recorded  
Feb 14, 2007  
Book 57 Page 204  
*Glenn M. Dale*  
Clerk



Approved By  
*Joe Hayes*  
City of Statham

BEING A SURVEY FOR LOT 3 TAKEN FROM PLAT OF THE THRASHER ESTATE PROPERTY BY N.B. DELOACH SURVEYOR 10-12-1995  
60' INGRESS - EGRESS EASEMENT SURVEYED BY W.T. DUNAHOO & ASSOC.  
AND IS STILL A PART OF LOT 3

PLAT FOR :		STATE OF GEORGIA		
<b>CLOVER ENTERPRISES</b>				
CITY	GMD	COUNTY	SCALE	DATE
STATHAM	1742	BARROW	1"=100'	09-09-06
<b>W. T. DUNAHOO AND ASSOCIATES</b>				
P.O. BOX 183 302 W. MAY ST.		(770) 887-3911		WINDER, GEORGIA