

Charles M. Hix
4.00 acres

CHARLES M. HIX
REF: PB 29, PG 242

CHARLES M. HIX
REF: PB 65, PG 41

440.04' ALONG R/W TO
R/W GA. HWY. #172.

PARCEL "A"
0.251 AC.
LEASE PROPERTY
REF: DB 65 PG 39
(UNDEFINED DRAINAGE ESMT.)

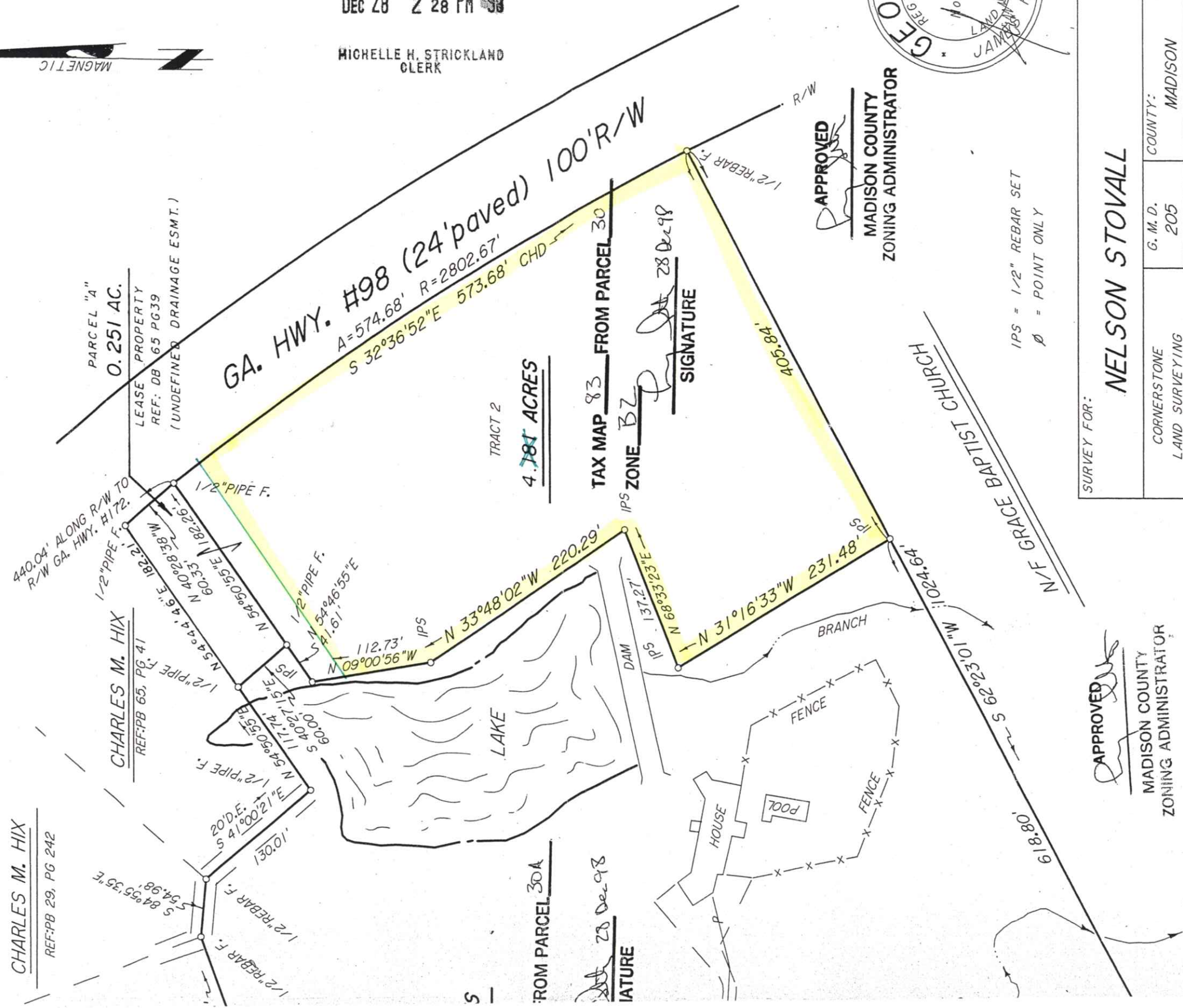
GA. HWY. #98 (24' paved) 100' R/W
A=574.68' R=2802.67'
S 32°36'52"E 573.68' CHD

TRACT 2
~~4.781~~ ACRES

TAX MAP 83 FROM PARCEL 30
ZONE B2
28 Dec 98
SIGNATURE

APPROVED
MADISON COUNTY
ZONING ADMINISTRATOR

IPS = 1/2" REBAR SET
Ø = POINT ONLY



FILED & RECORDED
CLERK SUPERIOR COURT
MADISON COUNTY, GA.
98-06789
Dec 28 2 28 PM '98
MICHELLE H. STRICKLAND
CLERK



APPROVED
MADISON COUNTY
ZONING ADMINISTRATOR

SURVEY FOR:
NELSON STOVALL

CORNERSTONE LAND SURVEYING RT. 1 BOX 302 "B" HULL, GA. 30646 PHONE 706-546-0504		G. M. D. 205	COUNTY: MADISON	STATE: GEORGIA
PHONE 706-546-0504		SCALE: 1" = 100'		0' 100' 200'
DRAWN BY: B. R. M. TRAV. CLOSURE = 1/21,842'		DATE: 7-16-98		
DRAWING NO. 98045		ANGLE CLOSURE = 2" PER		
		MAP CHECK = 1' / 100,000'+		
		INSTRUMENT = TOPCON GTS 3-C		
		ADJUSTMENT = COMPASS RULE		
THIS PLAT WAS PREPARED IN CONFORMITY WITH THE MINIMUM STANDARDS AND REQUIREMENTS OF THE LAW.				

COPY

